

# FINANCE, ADMIN & DELIVERABLES

UERRA GA4, Reading 21-23 November 2016

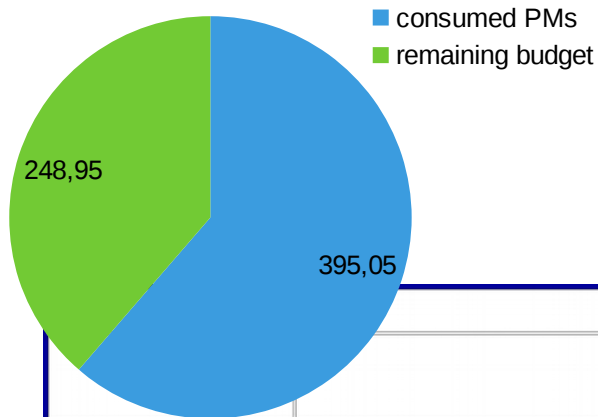
*Per Unden, SMHI - UERRA Coordinator*

*Madeleine Benderyd, SMHI – UERRA Financial Manager*



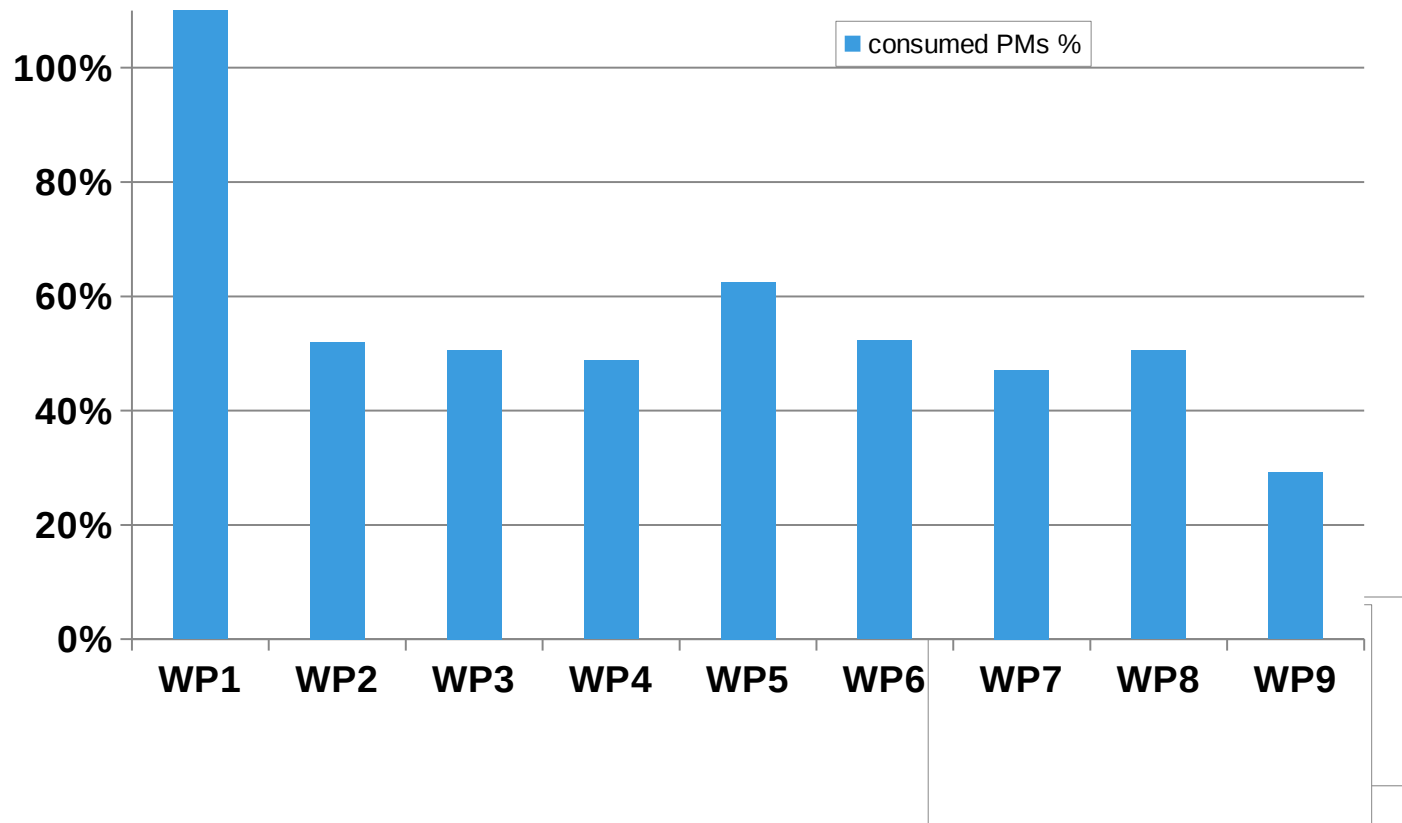
# Use of resources Period 1+2 (2014-2016-06)

## Total number of UERRA PMs consumed



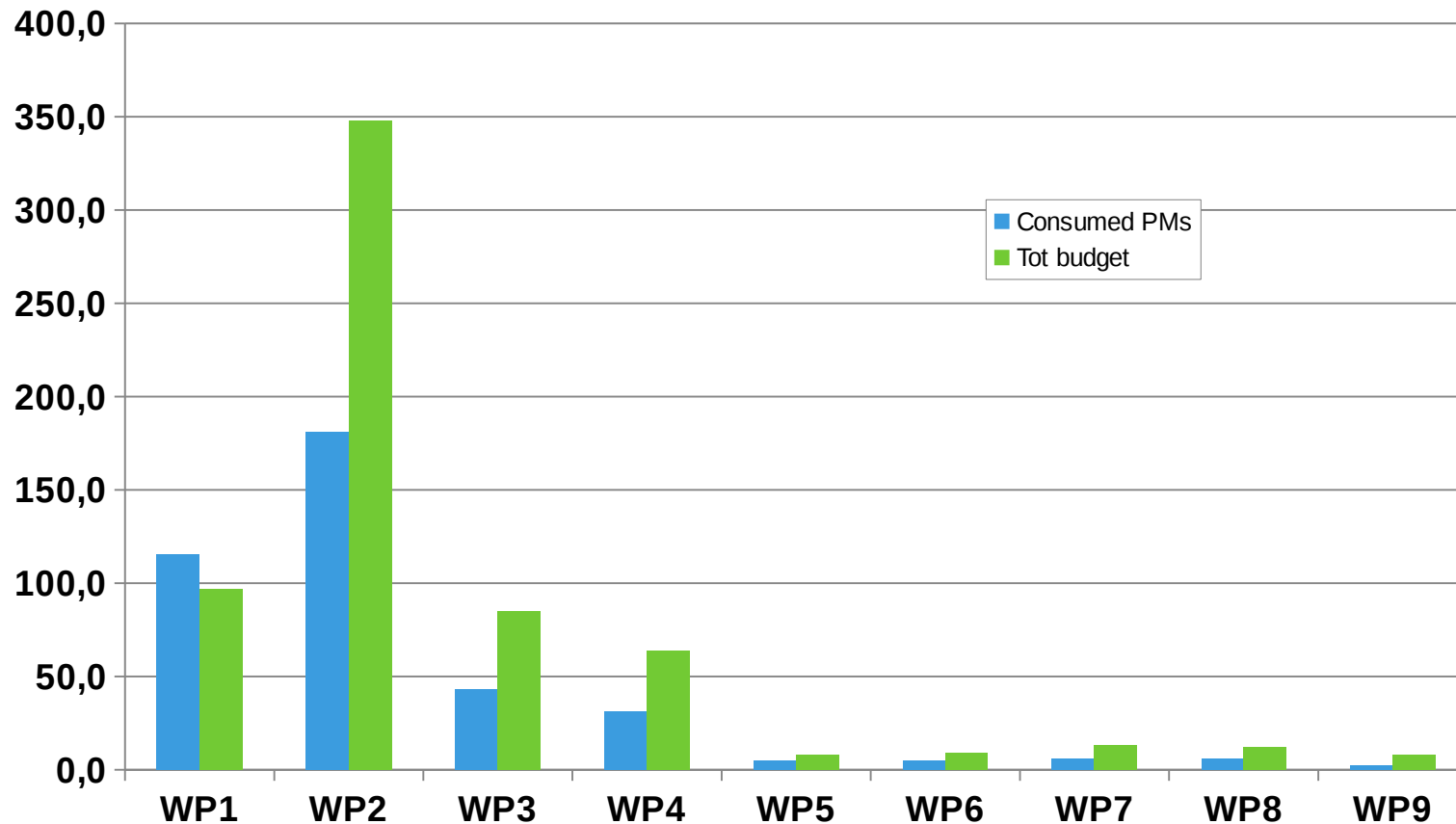
		<b>budget</b>	<b>spent</b>
<b>WORKPACKAGES</b>		<b>TOT</b>	<b>%</b>
1	Data resources and development, gridded and observational datasets	<b>97</b>	119%
2	Ensemble Data Assimilation Regional Reanalysis Dataset	<b>348</b>	52%
3	Assessing uncertainties by evaluation against independent observational datasets	<b>85</b>	51%
4	Facilitating downstream services (data, derived products and outreach)	<b>64</b>	49%
5	Consortium Management	<b>8</b>	63%
6	Scientific Coordination	<b>9</b>	52%
7	Dissemination and Outreach	<b>13</b>	47%
8	User feedback	<b>12</b>	51%
9	Overarching Coordination FP7 Copernicus climate change projects	<b>8</b>	29%
	<b>TOT</b>	<b>644</b>	<b>61%</b>

# Use of resources Period1+2 (2014-2016-06) % of PMs consumed per WP



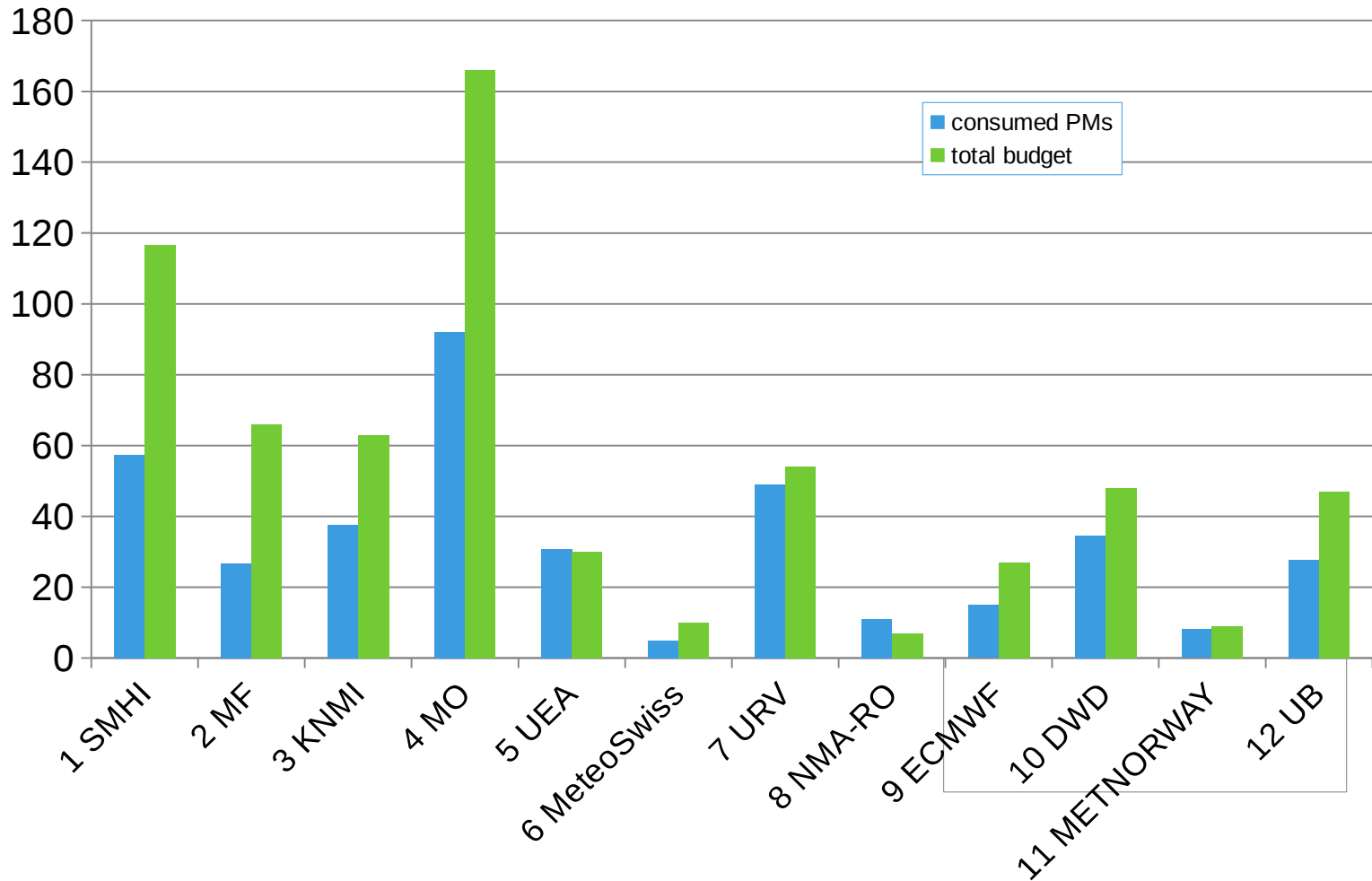
# Use of resources Period1+2 (2014-2016-06)

## Number of PMs consumed per WP



# Use of resources period 1+2 (2014-2016-06)

## Number of PMs consumed per beneficiary



# DELIVERABLES

## Deliverables – due months 13-36 1(2)

Del.no	Deliverable Name	WP no	Lead Ben.	Deliverable month	Deliverable date	Result
D1.9	E-OBS impact of the data	WP1	KNMI	15	01- apr- 15	Delivered
D2.11	Kalman Filter Ensemble DA observations	WP2	UB	15	01- apr- 15	Delivered
D3.3	Programme package	WP3	DWD	15	01- apr- 15	Delivered
D7.6	Web site	WP7	SMHI	15	01- apr- 15	Delivered
D1.3	DARE gaps post 1950	WP1	URV	18	01- jul- 15	Delivered
D7.3	EU brief I	WP7	KNMI	18	01- jul- 15	Delivered
D2.1	Ensemble variational DA development	WP2	MO	21	01- okt- 15	Delivered
D2.12	Kalman Filter Ensemble DA development	WP2	UB	21	01- okt- 15	Delivered
D1.10	Gridding improvements	WP1	UEA	24	01- jan- 16	Delivered
D1.12	Gridding resolution enhancement	WP1	KNMI	24	01- jan- 16	Delivered
D1.4	DARE gaps pre 1950	WP1	URV	24	01- jan- 16	Delivered
D2.10	MESCAN cloud analysis	WP2	SMHI	24	01- jan- 16	Delivered
D2.2	Ensemble variational DA observations	WP2	MO	24	01- jan- 16	Delivered
D3.4	Evaluation experiences	WP3	DWD	24	01- jan- 16	Delivered
D7.9	African workshop	WP7	KNMI	24	01- jan- 16	Delayed 15 M
D8.2	User Workshop I	WP8	KNMI	24	01- jan- 16	Delivered

## D7.9 African workshop

**Deliverable month: 24 (1 Jan, 2016)**

Lead beneficiary: KNMI

WP no: 7

**Delayed 15 M**

### **Description:**

**Contribution to a climate change capacity building workshops in Africa in the framework of the GFCS**

Beneficiaries involved:

KNMI



## Deliverables - due months 13-36 2(2)

Del.no	Deliverable Name	WP no	Lead Ben.	Deliverable month	Deliverable date	Result
D9.3	Lessons learned	WP9	KNMI	24	01-jan-16	Delivered
D1.5	DARE quality control	WP1	URV	30	30-jun-16	Delivered
D1.11	Gridding resolution assessments	WP1	KNMI	30	01-jul-16	Delivered
D2.3	Ensemble variational DA diagnostics	WP2	MO	30	01-jul-16	Delayed 4 M
D2.6	HARMONIE initial production	WP2	SMHI	30	01-jul-16	Delivered
D2.9	MESCAN ensemble	WP2	MF	30	01-jul-16	Delayed 4 M
D7.8	UERRA event	WP7	SMHI	32	01-sep-16	Delayed 2 M
D7.4	EU brief II	WP7	KNMI	33	01-okt-16	Delivered
D3.5	Preliminary assessment	WP3	DWD	34	01-nov-16	Delayed
D1.13	E-OPS updates	WP1	KNMI	36	01-jan-17	Pending
D1.14	Gridding uncertainty estimate	WP1	UEA	36	01-jan-17	Pending
D1.6	DARE homogenisation	WP1	UEA	36	01-jan-17	Pending
D1.7	DARE QC data use in UERRA	WP1	URV	36	01-jan-17	Pending
D1.8	DARE data archives	WP1	URV	36	01-jan-17	Pending
D4.4	ESGF	WP4	KNMI	36	01-jan-17	Pending
D7.7	Newsletters	WP7	SMHI	36	01-jan-17	Pending
D9.1	Plan of activities	WP9	KNMI	36	01-jan-17	Delivered

## D2.3 Ensemble variational DA diagnostics

**Deliverable month: 30 (1 July, 2016)**

Lead beneficiary: MO

WP no: 2

Delayed 4 M

**Description:**

**Preliminary report with ensemble diagnostics**

Beneficiaries involved:

MO



## D2.9 MESCAN ensemble

**Deliverable month: 30 (1 July 2016)**

Lead beneficiary: MF

WP no: 2

Delayed 4 M

**Description:**

**Ensemble surface reanalysis report (MF 10 pm)**

Beneficiaries

MF



## D7.3 UERRA event

**Deliverable month: 32 (1 Sept 2016)**

Lead beneficiary: SMHI

WP no: 7

Delayed 2 M

**Description:**

**UERRA show case Event**

Beneficiaries involved:

SMHI



## D3.5 Preliminary assessment

**Deliverable month: 34 (1 Nov 2016)**

Lead beneficiary: DWD

WP no: 3

Delivered now!

**Description:**

**Preliminary report of assessment of the first period of the RA**

Beneficiaries involved:

KNMI, MO, DWD, METNORWAY, UEA, METEOSWISS

# Thank you for your attention!

*If you have any questions please email*

*[madeleine.benderyd@smhi.se](mailto:madeleine.benderyd@smhi.se)*

*[per.unden@smhi.se](mailto:per.unden@smhi.se)*

