

WP4 Facilitating downstream services

- T4.1 – Establishing data services (ECMWF, KNMI)

MARS archiving of reanalysis data in common format at ECMWF is ongoing.

First focus on EURO4M 2008/9 for use in WP3, then subset of UERRA data (D4.1, Month 48)

WIKI inventory prepared for all datasets to be archived at ECMWF

WP4 Facilitating downstream services

- T4.1 – Establishing data services (ECMWF, KNMI)

Telecon held with CLIPC last week

INSPIRE compliant data dissemination plan (D4.2, Month 12) is delayed until April 2015; will link to CLIPC data architecture plan

MARS connection to ESGF is being established within CLIPC; ESGF nodes set up at STFC, KNMI, NSC/SMHI, etc.

UERRA promised to make at least one dataset available through ESGF (D4.4, Month 36)

UERRA/CLIPC approach is ready for future C3S climate data store

WP4 Facilitating downstream services

- T4.1 – Establishing data services (ECMWF, KNMI)

Data portal prototype is ready (D4.3, Month 12) using ECMWF Web API framework

Data visualisation prototype (<http://euro4mvis.knmi.nl/>) developed in EURO4M has been extended (D4.3)

Demonstrated that ECMWF-MARS data at their WMS server can be added seamlessly



EUROPEAN REANALYSIS AND OBSERVATIONS FOR MONITORING

Tracking changes in European climate

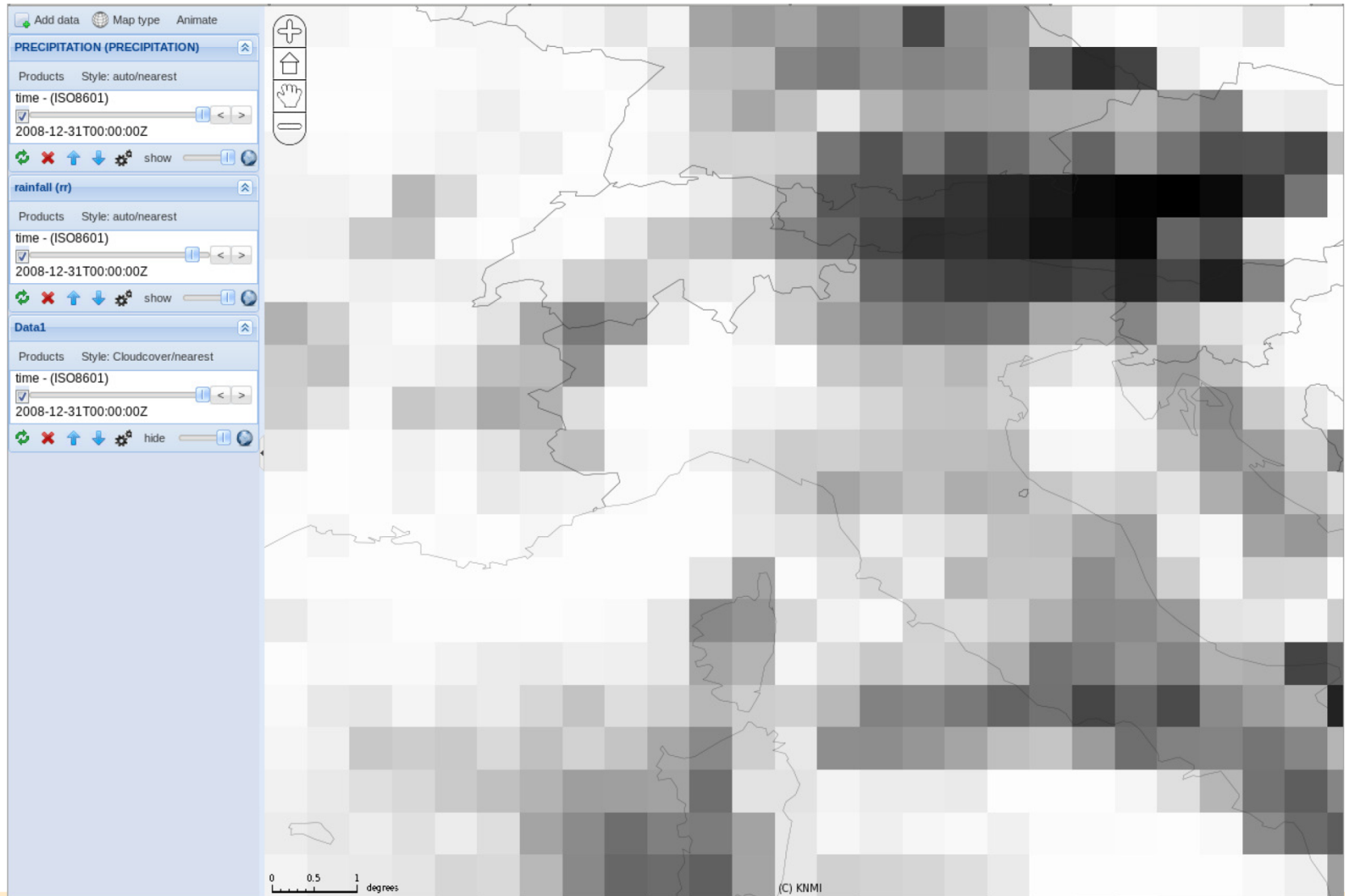
Storage and visualization

File: /Demo/

- [../](#)
- [01 EURO4M-APGD/](#)
- [02 ECAD/](#)
- [05 E-OBS/](#)
- [06 CRU-UEA/](#)
- [08 HOAPS-GPCC/](#)
- [09 SIS/](#)
- [10 ATOVS/](#)
- [13 4D-VAR-Metoffice/](#)
- [14 3D-VAR-SMHI/](#)

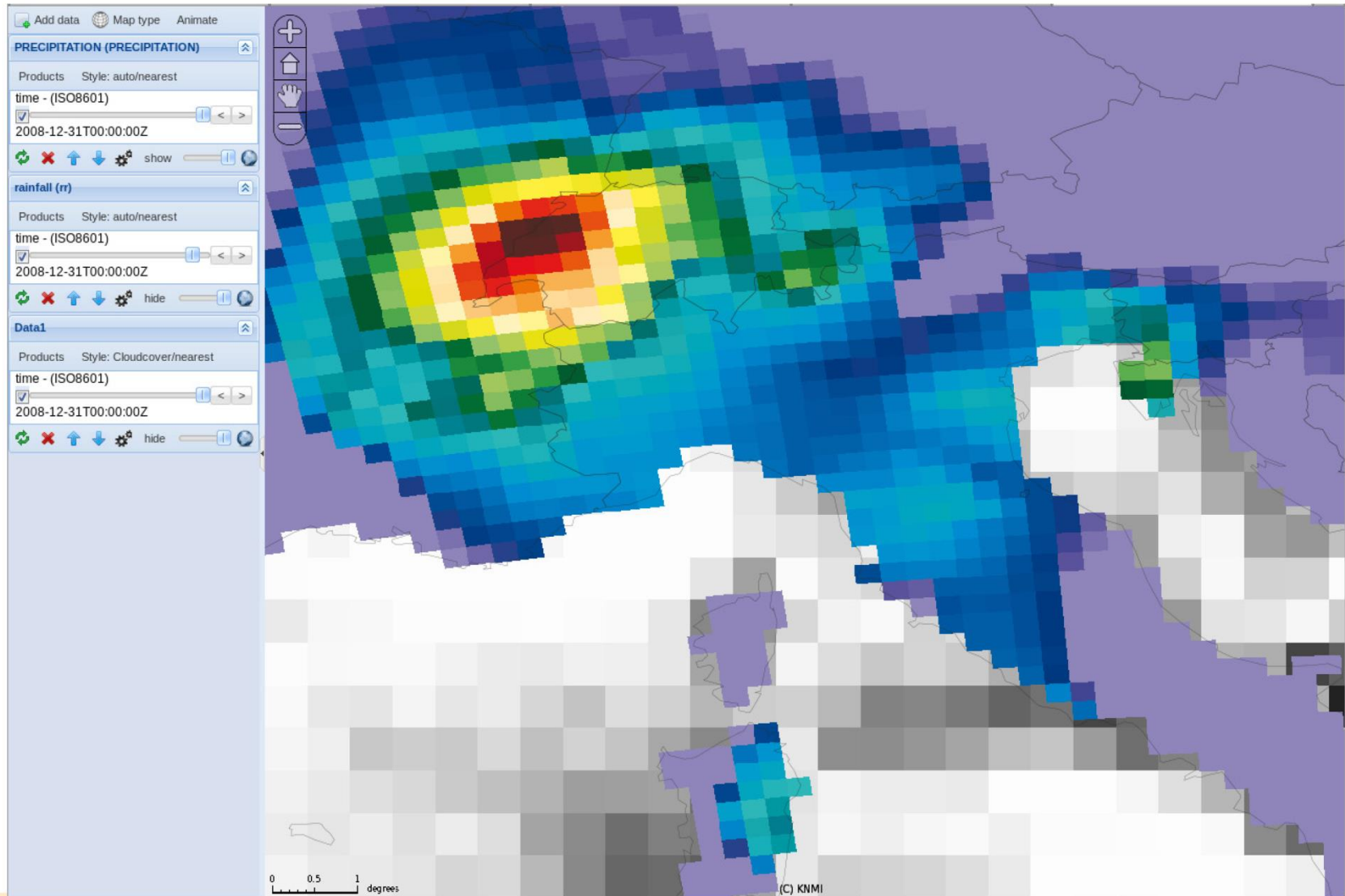


Precipitation



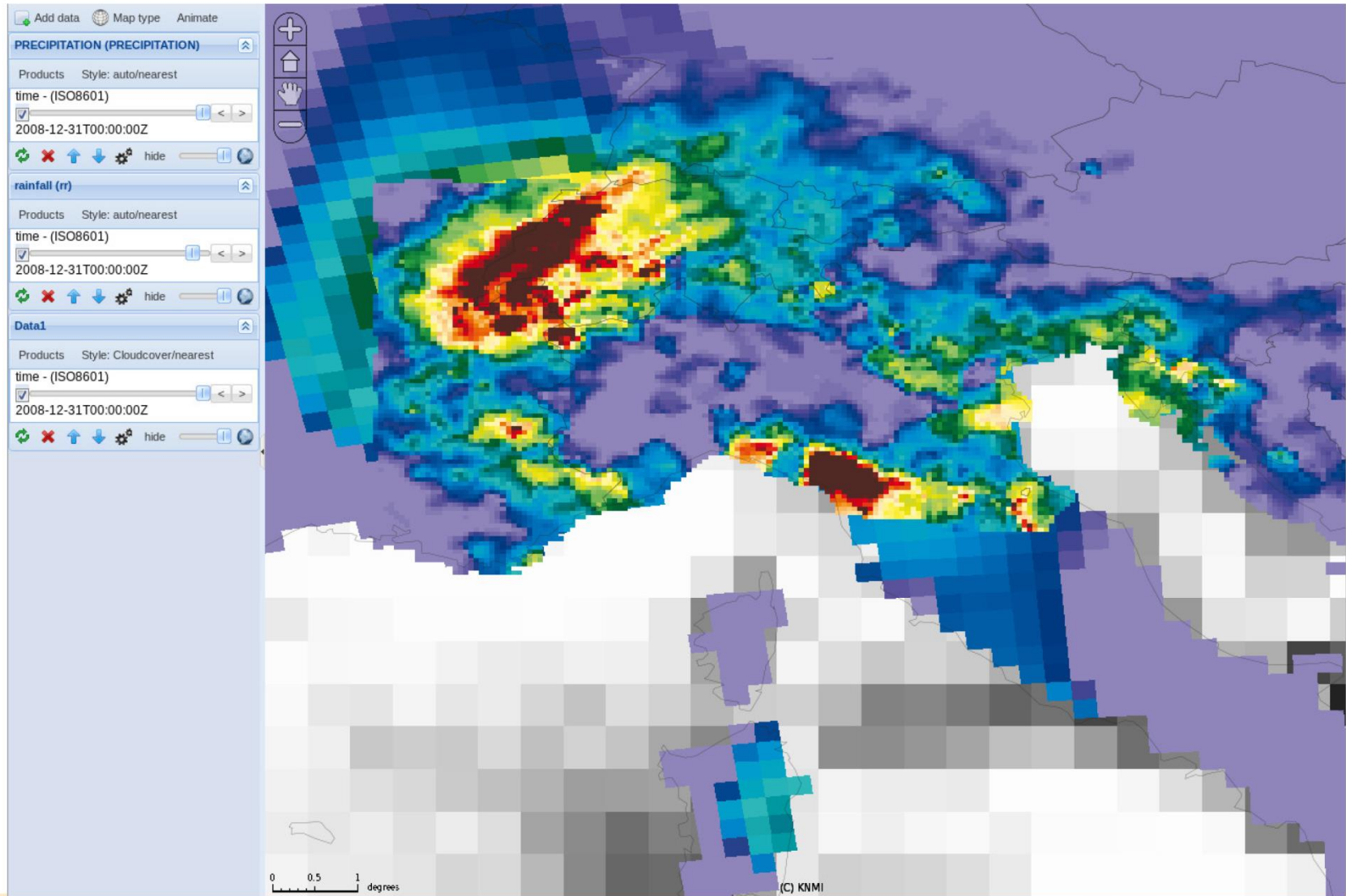


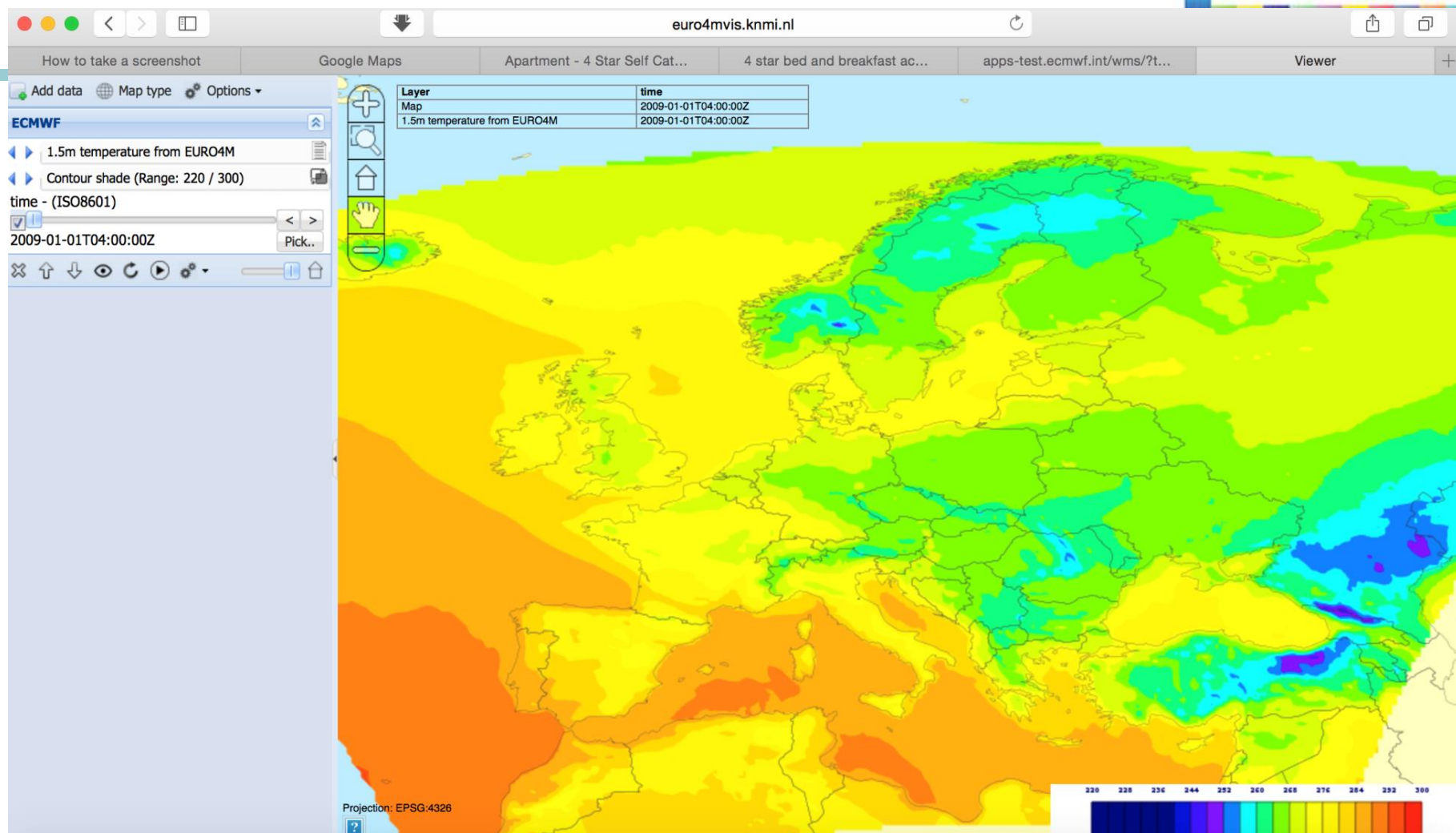
Precipitation





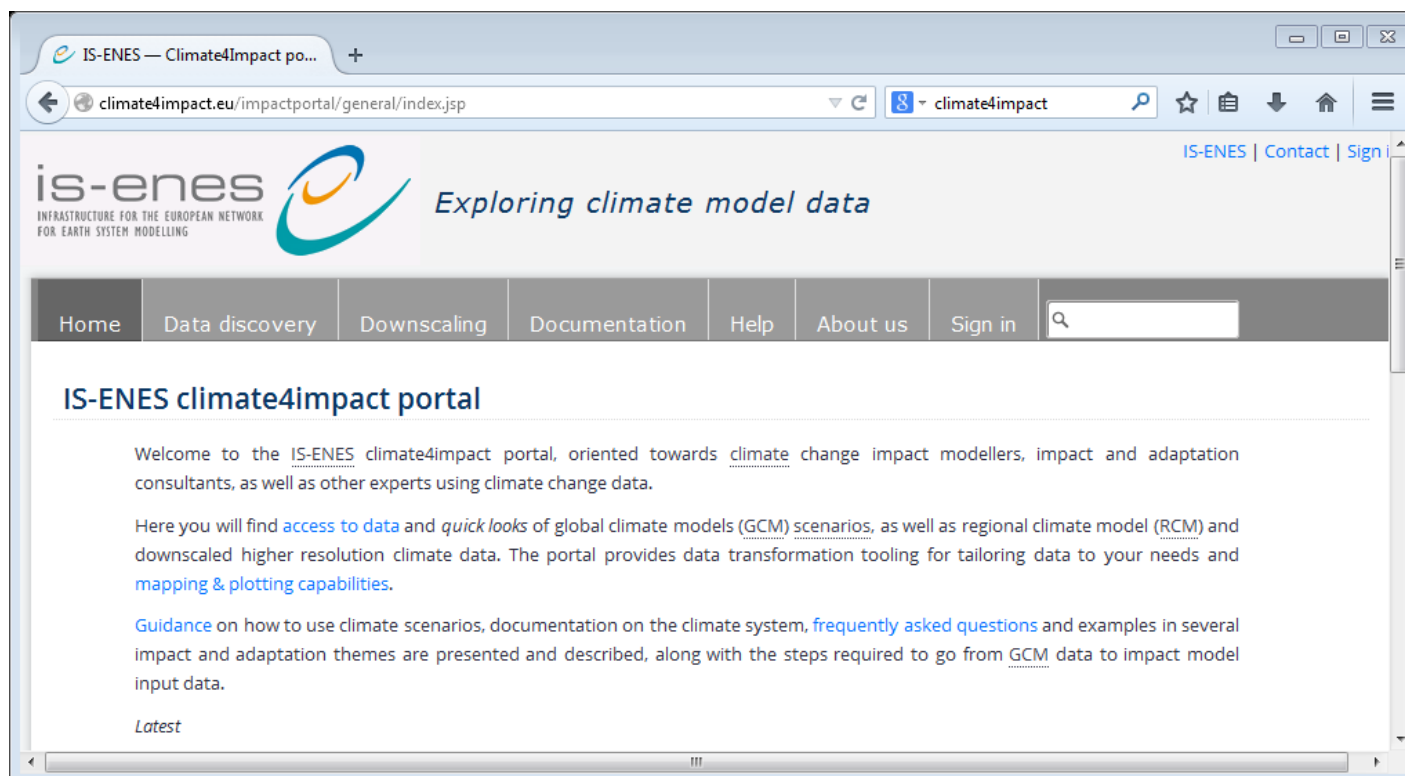
Precipitation





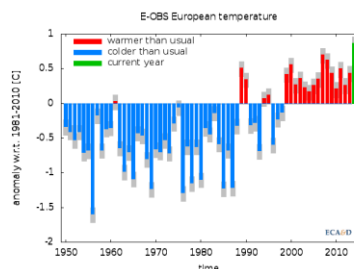
WP4 Facilitating downstream services

Same data visualisation tool is also used in IS-ENES2 and CLIPC



WP4 Facilitating downstream services

- T4.2 – User-oriented products (KNMI, SMHI, MF)



Climate indicator bulletin (updated 19 Jan 2015)

http://cib.knmi.nl/mediawiki/index.php/2014_warmest_year_on_record_in_Europe

Indices calculated for gridded data; first tests with E-OBS (together with EUPORIAS project); reanalysis data will follow (D4.5, Month 48)

Hydrological downstream modelling using 20YR EURO4M data (D4.6)